



## Multi Gas Analyser

### A VERSATILE SEQUENTIAL GAS MONITORING SYSTEM

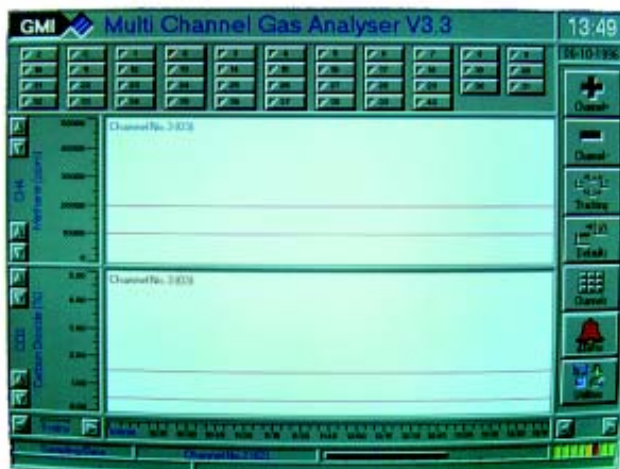
#### FEATURES

- ◆ Continuous monitoring of Flammable, Carbon Dioxide, Oxygen and Toxic Gases from up to 128 sample points
- ◆ Powerful pumping system can draw sample from 5000 metres
- ◆ User friendly system control via standard PC keyboard
- ◆ Sample times, alarm levels and data analysis easily accessed
- ◆ Automatic calibration routine ensures high level of safety with user selectable calibration interval
- ◆ Automatic datalogging of gas levels
- ◆ System can be remotely monitored via modem
- ◆ Data export function



- ◆ Three separate gas traces can be displayed on screen showing concentrations of samples

- ◆ System status is displayed on screen including flow warnings



- ◆ Analysis and graphical display of gases as historical trend



**TECHNOLOGY**

The Multi Gas Analyser uses Infrared technology for the detection of bipolar gases such as carbon dioxide and methane. Electrochemical cells are used for toxic gases and oxygen.

**SAMPLING**

The sequencer in the Multi Gas Analyser presents each gas sample in turn from every sample point location to the analyser. The previous sample is fully flushed out from the analyser before receiving the next sample, this eliminates false alarms being initiated from an incorrect sample point. The sampling time from each point can be set, by the user, between 1 and 120 minutes.

**AUTO-CALIBRATION**

The Multi Gas Analyser has an auto-calibration system as standard. The reliability and integrity of the system is ensured with this user-friendly, flexible calibration routine. The auto-calibration frequency can be set by the user to calibrate every hour up to a maximum of every 168 hours (once a week). Once the calibration routine is initiated, a sample of zero gas (usually nitrogen) is introduced and used to set the zero limits. A known concentration of calibration gas is then presented to the analyser, this sets the calibration limits. The system then returns to normal operation.

**FILTERS**

An end of line filter unit is used to prevent contamination from water or dust. For severe conditions, where heavy particulate contamination is possible, special heavy duty filters can be supplied.

**DATA STORAGE**

All sample data is stored on the system hard disk drive and can be downloaded for archiving or for exporting to a spreadsheet for analysis.

**OUTPUTS**

- Common and individual low and high alarm relays can be provided.
- Common Fault / Flow Fail alarm relays.
- Standard 3PCO contacts rated at 10A, 250Vac / 24Vdc non inductive load.

In addition, the Multi Gas Analyser can be configured to operate ancillary equipment, e.g. Audible / Visual alarm units.

Gas Measurement Instruments Ltd.,  
Inchinnan Business Park,  
Renfrew, PA4 9RG, Scotland.  
Tel: +44 (0) 141-812 3211 Fax: +44 (0) 141-812 7820

[www.gmiuk.com](http://www.gmiuk.com)  
e-mail: [sales@gmiuk.com](mailto:sales@gmiuk.com)

Service Centre:  
Crownhill, 25 Cochran Close,  
Milton Keynes, MK8 OAJ  
Tel: +44 (0) 1908 568867 Fax: +44 (0) 1908 261056

As an ISO 9001 approved company, GMI Ltd's quality assurance programmes demand the continuous assessment and improvement of all GMI products. Information in this leaflet could thus change without notification and does not constitute a product specification. Please contact GMI or their representative if you require more details.



Certificate No Q/09760

